



<https://www.efl-esl.com>

Copyright © 2023 Learning English Curriculum
ALL RIGHTS RESERVED.

NOTE: Adobe will only allow printing in
High Resolution

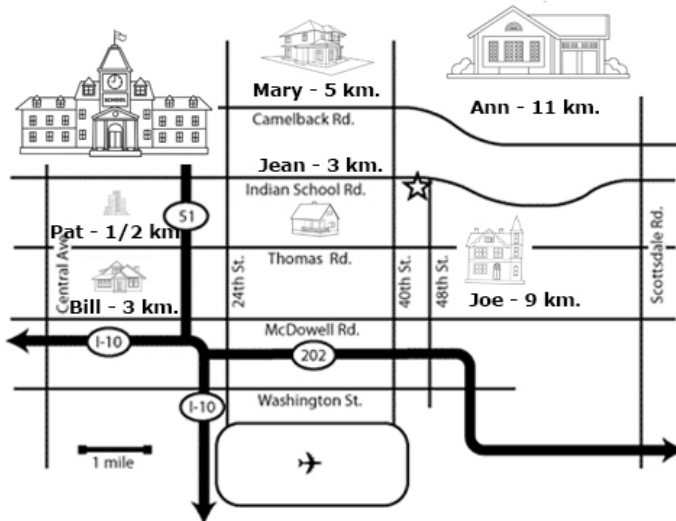
COMPARATIVE DISTANCE

VOCABULARY:	Spelling – “center” American	“centre” - British
close to	the biggest	far from
closer to	bigger than	farther from
the closest	nearer to	the farthest
as close to _____ as	the nearest	as far from _____ as
young	as near to as	the same distance from
		point (to) than kilometer old older than

ACTIVITY 1

**Listen to your teacher read each sentence.
Point to the English School and then point to the correct house.**

- Mary's house is far from the English School.
 Joe's house is farther from the English School than Mary's.
 Ann's house is the farthest from the English School.
 Bill's house is closer to the English School than Mary's house,
 Pat's house is the closest to the English School.
 Jean's house is the same distance from the English School as Bill's house.



**ACTIVITY 2 Divide into small groups.
Ask and answer the questions. Check your answers.**

1. Does Mary live farther from the English School than Bill?
2. Who lives the farthest from the English School?
3. Who lives the closest to the English School?
4. Who lives the same distance from the English School as Jean?
5. Does Joe live as far from the English School as Ann?

1. Yes, she lives farther from the English School than Bill.
2. Ann lives the farthest from the English School.
3. Pat lives the closest to the English School.
4. Bill lives the same distance from the English School as Jean.
5. No, Joe doesn't live as far from the English School as Ann.

WORKSHEET 1

ACTIVITY 3: Talk to three students, ask them where they live and write their answers.

EXAMPLE: **You ask:** "Fred, do you live near the English School?"
Student: "No, I live far from the English School." or
"Yes, I live near the English School."
You ask: "How far from the English School do you live, Fred?"
Student: " I live 3 kilometers from the English School."

QUESTIONNAIRE: (name) Fred lives 3 kilometers from the English School.
EXAMPLE: He lives farther from the English School than I do.
or He lives nearer to the English School than I do.

Now complete the questionnaire.

1. (name)_____ lives _____ the English School. He / she lives _____ I do.
--

2. (name)_____ lives _____ the English School. He / she lives _____ I do.
--

3. (name)_____ lives _____ the English School. He / she lives _____ I do.
--

EXERCISE 1: Put these words in the correct order to make a sentence.

1. one, Melanie, the, English School, lives, from, kilometer

2. _____
the, English School, Jim, from, lives, ten, kilometers

3. _____
to, John, Melanie, the, English School, nearer, lives, than

4. _____
John, as, as, lives, the, English School, far, from Pamela

5. _____
the, English School, lives, the, Jim, farthest, from

WORKSHEET 2

EXERCISE 2

Melanie lives 1 kilometer from the English School.
John lives 3 kilometers from the English School.
Pamela lives 3 kilometers from the English School.
Jim lives 10 kilometers from the English School.

Melanie lives nearer to the English School than John.
Melanie lives closer to the English School than John.

NOTE The meaning is the same.

NOTE The meaning is the same.

Pamela and John live the same distance from the English School.
Pamela lives the same distance from the English School as John.
Pamela lives as far from the English School as John.

Jim lives the farthest from the English School.

Answer these questions in sentences:

1. Who lives closer to the English School than Pamela?

2. _____
Who lives farther from the English School than John?

3. _____
Who lives the same distance from the English School as John?

4. _____
Who lives the closest to the English School?

5. _____
Who lives the same distance from the English School as you?

6. _____
Do you live farther from the English School than Jim?

7. _____
Do you live closer to the English School than Melanie?

8. _____
Do you live the same distance from the English School as Pamela?

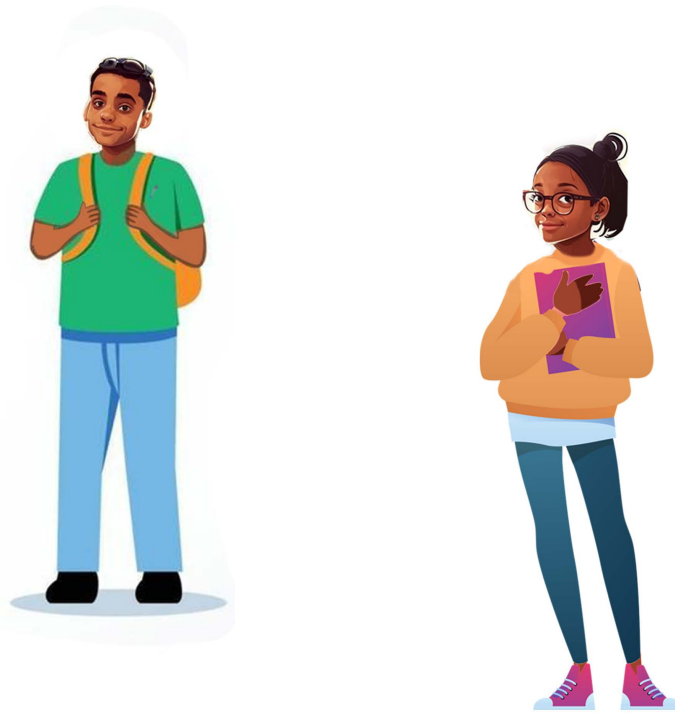
9. _____
Do you live as near to (as close to) the English School as Melanie?

10. _____
Do you live farther from the English School than Pamela?

WORKSHEET 3

EXERCISE 3

Divide the class into small groups. Copy the next 2 pages and give each group a copy of each page.
The students in each group are to work together and answer the questions on page 6.
The group that answers all of the questions first is the winner.



Robert and Ann are good friends. They do a lot of things together. Robert lives with his parents in a townhouse, and Ann has her own apartment. Robert is a fireman, Ann works in an office. They both take classes in the language school. They often go to the beach on the weekends.

The beach



Ann's apartment



4 km

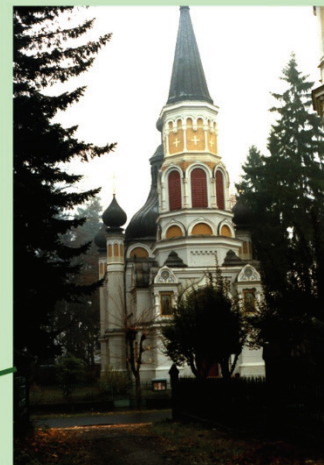
3 km

8 km

5 km

7 km

2 km



The church



Robert's house

3 km

4 km

The language school



The firehall



WORKSHEET 3

Look at the map and answer the questions: **EXERCISE 3**

1. Does Ann live closer to the beach than Robert?

2. Which is closer to Robert's house: Ann's apartment or the firehall?

3. Is Ann's apartment closer to the language school than to the firehall?

4. Which is the closest to Ann's apartment: the firehall, Robert's house, or the beach?

5. Which is the farthest from Ann's apartment: the firehall the beach, or the language school?

6. Is the language school closer to Robert's house than the beach?

7. Which is the closest to Robert's house: the firehall, the language school, or the beach?

8. If Robert were walking, would it take longer to walk to the firehall or to the beach?

9. Could Robert walk to the language school in the same time as he took to walk to the beach?

10. Which is farthest from Robert's house: the church, the language school, or Ann's apartment?

ORAL QUESTIONS

Ask one student – “How far from the school do you live?”

Write their answer on the blackboard as shown below.

Ask other students until you find one that lives a different distance from the school.

Write their answer on the blackboard under the first one.

Ask two more students who live different distances from the school.

Write their answers on the blackboard under the others.

Finally, find a student that lives the same distance from the school as any one of the others.

Write their answer on the blackboard under the first one.

EXAMPLE:

- _____ lives _____ kilometers from the school.
- _____ lives _____ kilometers from the school.
- _____ lives _____ kilometers from the school.
- _____ lives _____ kilometers from the school.
- _____ lives _____ kilometers from the school.

This last one will be the same distance as one of the others.

Now ask the students these questions.

- Who lives the closest to the school?
- Who lives the farthest from the school?
- Who lives farther from the school than _____?
- Who lives closer to the school than _____?
- Who lives the same distance from the school as _____?

- Do you live farther from the school than _____?
- Do you live nearer to the school than _____?
- Do you live near to _____?
- Do you live the same distance from the school as _____?
- Do you live as far from the school as _____?
- Do you live as close to the school as _____?

The teacher could ask the students a number of questions about the location of where they live. This would provide practice in making distance comparisons.

The following are some typical questions and answers.

1. Which is farther from here, the Post Office, or the bus stop?
The _____ is farther from here.
2. Which is the farthest from here, London, Rome or Bombay?
_____ is the farthest from here.
3. Which is the closest to our town, New York, Rome or Delhi?
_____ is the closest.
4. Is London closer to Paris than Delhi?
Yes, London is closer to Paris than Delhi.

TEACHER GUIDE

EXERCISE 1

PAGE 2

ANSWERS TO THE WORKSHEET QUESTIONS

1. *Melanie lives one kilometer from the English School.*
2. *Jim lives ten kilometers from the English School.*
3. *Melanie lives nearer to the English School than John.*
4. *Pamela lives as far from the English School as John.
John lives as far from the English School as Pamela.*
5. *Jim lives the farthest from the English School.*

EXERCISE 2

PAGE 3

ANSWERS TO THE WORKSHEET QUESTIONS

1. *Melanie lives closer to the English School than Pamela.*
2. *Jim lives farther from the English School than John.*
3. *Pamela lives the same distance from the English School as John.*
4. *Melanie lives the closest to the English School.*
5. *_____ lives the same distance from the English School as me.*
6. *Yes, I live farther from the English School than Jim.
No, I don't live farther from the English School than Jim.*
7. *Yes, I live closer to the English School than Melanie.
No, I don't live closer to the English School than Melanie.*
8. *Yes, I live the same distance from the English School as Pamela.
No, I don't live the same distance from the English School as Pamela.*
9. *Yes, I live as close to the English School as Melanie.
No, I don't live as close to the English School as Melanie.*
10. *Yes, I live farther from the English School than Pamela.
No, I don't live farther from the English School than Pamela.*

EXERCISE 3 PAGE 6

ANSWERS TO THE WORKSHEET QUESTIONS

1. Does Ann live closer to the beach than Robert?
Yes, she lives closer to the beach than Robert.
2. Which is closer to Robert's house: Ann's apartment or the firehall?
They are both the same distance from Robert's house.
3. Is Ann's apartment closer to the language school than to the firehall?
No, her apartment is not closer to the language school than to the firehall.
No, the language school is farther away than the firehall.
4. Which is the closest to Ann's apartment: the firehall, Robert's house, or the beach?
Robert's house is the closest.
5. Which is farthest from Ann's apartment: the firehall the beach, or the language school?
The language school is the farthest.
6. Is the language school closer to Robert's house than the beach?
Yes, the language school is closer than the beach.
7. Which is the closest to Robert's house: the firehall, the language school, or the beach?
The firehall is the closest.
8. If Robert were walking, would it take longer to walk to the firehall or to the beach?
If he were walking, it would take longer to walk to the beach.
9. Could Robert walk to the language school in the same time as he took to walk to the beach?
No, it would take less time to walk to the language school.
10. Which is farthest from Robert's house: the church, the language school, or Ann's apartment?
The language school is the farthest.

Visit us Online for More

<https://www.efl-esl.com>

BEGINNERS ESL LESSON PLANS BOOK 1



20 ESL Lessons, 5 tests, 4 reviews for Beginners
Ready for the Classroom!

Includes:

- **Student Reader** - with games, role plays, oral questions & small group activities
- **Student Workbook** - role play, written activities
- **Teacher Guide** - full instructions, answers to written activities, and conversational activities



INCLUDES FULL AUDIO

BEGINNERS LESSON PLANS BOOK 1

**20 complete lesson plans
3 Textbooks plus
Downloadable Audio and
Video**

Includes:

- Student Reader
- Student Workbook
- Teachers Guide
- 20 lessons
- 5 tests
- 4 reviews
- Glossary
- Download PDF or Paperback

[Book 1 Overview](#)

BEGINNERS ESL LESSON PLANS BOOK 2



20 ESL Lessons, 5 tests, 4 reviews for Beginners
Ready for the Classroom!

Includes:

- **Student Reader** - with games, role plays, oral questions & small group activities
- **Student Workbook** - role play, written activities
- **Teacher Guide** - full instructions, answers to written activities, and conversational activities



INCLUDES FULL AUDIO

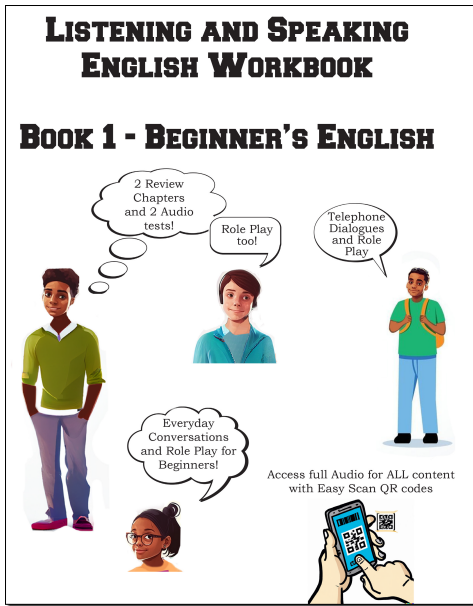
BEGINNERS LESSON PLANS BOOK 2

**20 complete lesson plans
3 Textbooks plus
Downloadable Audio and
Video**

Includes:

- Student Reader
- Student Workbook
- Teachers Guide
- 20 lessons
- 5 tests
- 4 reviews
- Glossary
- Download PDF or Paperback

[Book 2 Overview](#)

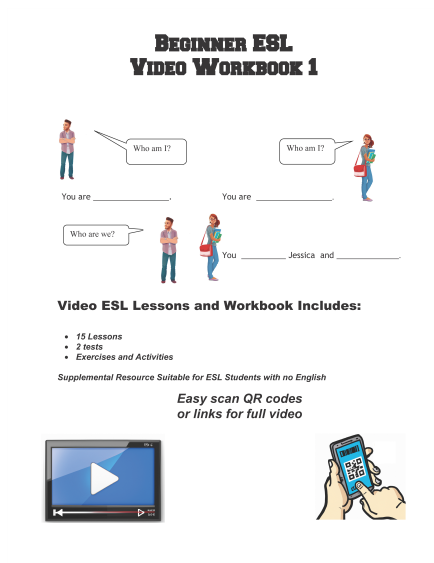


Listening and Speaking Workbook

Complete Listening and Speaking English Workbook – includes full downloadable audio!

- Vocabulary for each Lesson
- Everyday Conversations – Listen to full audio then role-play!
- 14 Lessons
- 2 Review Chapters
- 2 Full Audio Tests with Answer Key
- Role Play
- Telephone Conversations and role play
- Question and Answer Dialogues

<https://efl-esl.com/listening-speaking-english/>



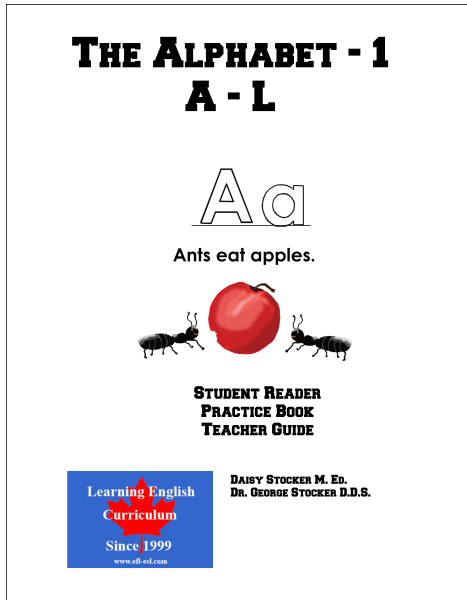
Beginners ESL Video Workbook

Includes:

- 15 lesson plans with full video
- Supplemental activities and games
- Video introduction for all topics

Learn More <https://efl-esl.com/video-workbooks/>

Children's ESL

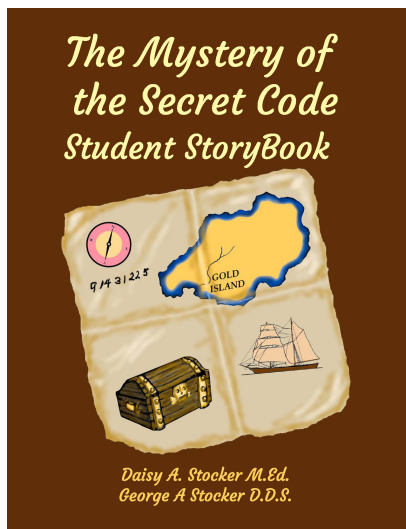


This book introduces the alphabet from A to L and the numbers from 1 – 10.

Includes:

- Student book – 37 pages
- Student Workbook – 24 pages
- Teacher's Guide Book – 50 pages
- Glossary — 142 new words
- Colorful games and activities suitable for lamination –use over and over!

<https://efl-esl.com/alphabet-activities-for-esl-students/>



ESL Graphic Novels for Kids (Comic Books)

These books offer an oral approach for young ESL / EFL students aged 6 - 10.

They contain high interest stories, written in the graphics novel format that children love. This is very suitable for supplementary study, home school, as well as for summer camps.

<https://efl-esl.com/esl-graphic-novels-for-children/>